



**KWW 72**  
Window Wall Systems

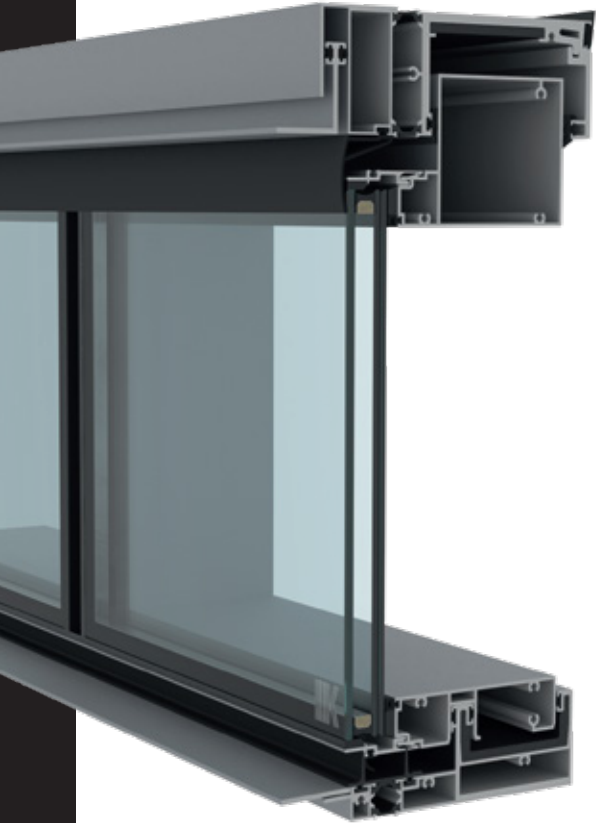
elevate your space  
with a sleek all-glass look.

USA



**KLEIDCO®**

# elevate your space with a sleek all-glass look.



**Aesthetic Appeal:** KWW72 is designed to enhance the visual appeal of any space with its sleek and modern all-glass look. The structural bonding technology ensures seamless joints and a clean, uninterrupted appearance, creating a sophisticated aesthetic that complements contemporary architectural designs.

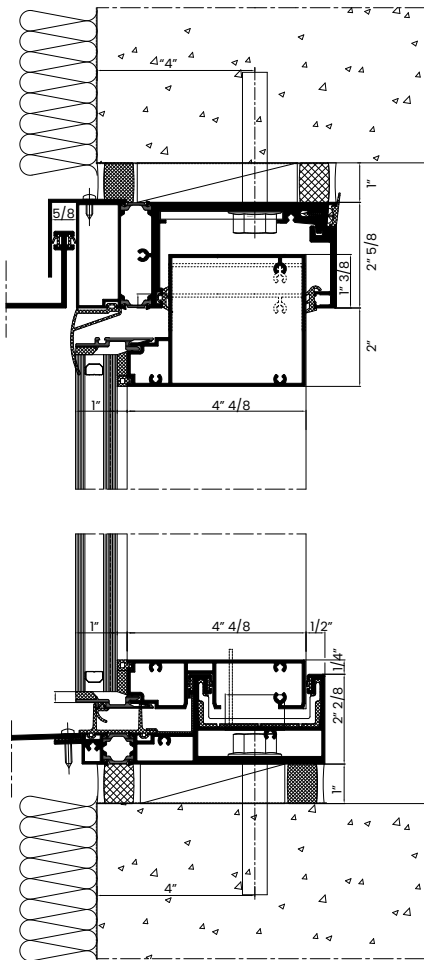
**High Thermal Performance:** Despite its focus on aesthetics, KWW72 doesn't compromise on thermal performance. It incorporates advanced insulation materials and techniques to minimize heat transfer, ensuring energy efficiency and comfortable indoor environments.

**Slab Edge Cover Integrity:** KWW72 features a unique slab edge cover design that enhances the overall integrity of the system. This innovative feature not only provides a clean and finished look but also ensures structural stability and weather resistance, making it ideal for diverse environmental conditions.

**Seamless Integration:** KWW72 seamlessly integrates with doors and other building elements, providing a unified look throughout the facade. The structural bonding technology allows for flexible configurations and customization options, ensuring a perfect fit for your project's unique requirements.

**Durable and Secure:** With its robust construction and advanced bonding methods, KWW72 offers durability and security. The bonded glass panels provide enhanced resistance to environmental elements and ensure long-lasting performance, making it a reliable choice for various applications.

Upgrade your space with KWW72 and enjoy its exceptional aesthetic appeal, high thermal performance, slab edge cover integrity, seamless integration, and durable construction. Experience the beauty of structural bonding technology and elevate your architectural vision to new heights.



## Technical Properties

System Visible Width	2" 7/8
Mullion Depth	4" 1/2
Mullion Inertia	230 cm <sup>4</sup>
Transom Depth	4" 1/2
Glazing Thickness	1" 1/16
Max. Sash Height	8' 2"
Max. Sash Weight	440 Lbs

## Performance Values

Air	ASTM E 283	Air Permability	+6.24 psf	
	Water	ASTM E 331	Watertightness / Static	+12 psf
		AAMA 501.1-05	Watertightness / Dynamic	+12psf
Wind	Structural Performance			
	ASTM E 330	Design wind Load Procedure A	± 40 psf	
		Proof Load Procedure A	± 60 psf	
	AAMA 501.7	Seismic Induced	1" Down	
		Interstory Vertical Movement	0.75" Up	
Seismic	Seismic Induced Interstory Horizontal Movement			
	AAMA 501.4	Serviceability	3"	
		Safety	2"	

**KLEIDCO**  
part of SARAY

**KLEIDCO Building Solutions**

33 Nassau Ave.

Brooklyn, NY 11222

usa.kleidco.com | +1 916-875-2235

